

NucleoGene 6X Loading Dye Instructions for Use

Release Date— 01.12.2021

Store at -20°C

REF

NGOT001 5 x 1 ml

For research use only.
Not suitable for diagnostic use.
For professional use only.

Description

Nucleogene 6X Loading Dye Solution is used to prepare DNA markers and samples for loading on agarose or polyacrylamide gels. It is recommended for the routine DNA work use. Loading Dye contains two tracking dye, bromophenol blue and xylene cyanol FF for visual tracking of DNA migration during electrophoresis. The presence of glycerol in the solution ensures that the same sample forms a layer at the bottom of the well; the EDTA included in the solution binds divalent metal ions and inhibit dependent nuclease activities.

Composition

Nucleogene 6X Loading Dye Solution

- Tris base
- Bromophenol blue
- Xylene cyanol
- Glycerol

Storage and Stability

Store at room temperature or 4 °C up to 12 months. -20 °C • For longer periods, store at -20 °C.

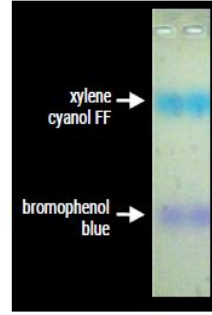
About Product

- Visual two-color tracking of DNA migration during electrophoresis.
- No DNA masking during gel exposure to UV light.
- Tested for DNA sample preparation prior to agarose gel electrophoresis.

Protocol

1. Add 1 volume of 6X Loading Dye Solution to 5 volumes of DNA samples.
2. Mix well, spin down then load on the gel.

6X Loading Dye Solution



Electrophoresis of tracking dyes in 6X Loading Dye Solution

Dye	0.5-1.5% agarose	2.0-3.0% agarose
Xylene cyanol	10'000-4000 bp	750-200 bp
Bromophenol blue	500-400 bp	150-50 bp



Çavuşoğlu Mahallesi Spor Caddesi,
No:70 Kat:5 Daire:4, 34873
Kartal/İstanbul/TURKEY
E-mail: info@nucleogene.com
Web: www.nucleogene.com